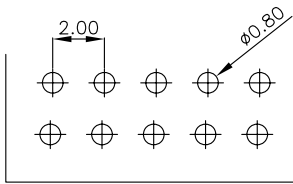
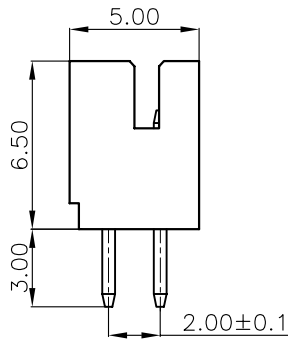
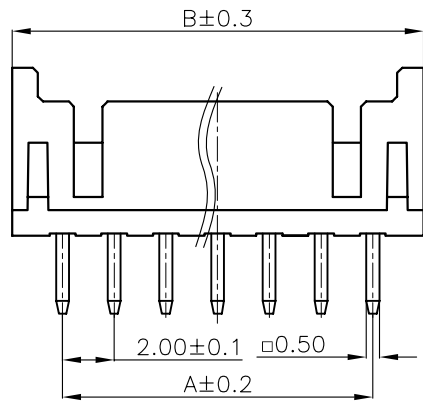
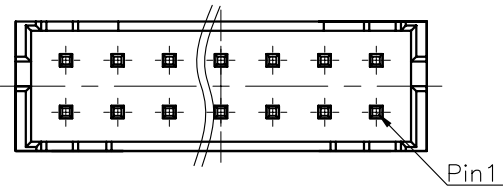
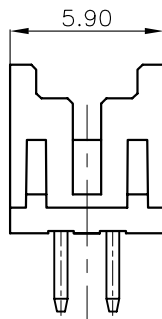


ROHS G103



RECOMMENDED PCB LAYOUT
(TOLERANCE:±0.10)



2X2P

1.ELECTRICAL SPECIFICATIONS:

- 1.1 Rated current and voltage(额定电流):
3.0A 250V AC(r.m.s)
- 1.2 Dielectric Withstanding Voltage(耐电压) :
800V AC for one minute
- 1.3 Contact Resistance(接触电阻) :
20mΩ max
- 1.4 Insulation Resistance(绝缘电阻) :
1000MΩ min
- 1.5 Operating Temperature(工作温度) :
-25℃ ~ 85℃

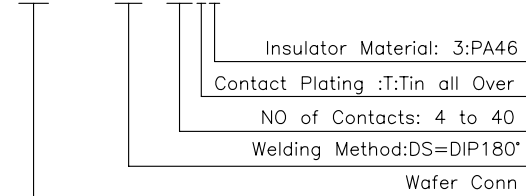
2.MATERIAL SPECIFICATION:

- 2.1 Insulator Material(绝缘体材质):
PA46 UL94V-0
- 2.2 Contact Material(端子材质):
Brass,Tin-plated
- 2.3 Applicable wire:28AWG TO 22AWG

▲ Non-tooled parts
No.of positions DIM list:

CONTACTS	DIMENSIONS	
	A	B
4	2.00	5.90
6	4.00	7.90
8	6.00	9.90
10	8.00	11.90
12	10.00	13.90
14	12.00	15.90
16	14.00	17.90
18	16.00	19.90
20	18.00	21.90
22	20.00	23.90
24	22.00	25.90
26	24.00	27.90
28	26.00	29.90
30	28.00	31.90
32	30.00	33.90
34	32.00	35.90
36	34.00	37.90
38	36.00	39.90
40	38.00	41.90

WB2003DS-XXT3



E			
D			
C			
B			
A			
NO.	DATE	DESCRIPTION	APPROVAL

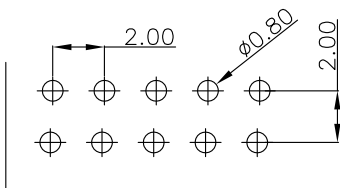
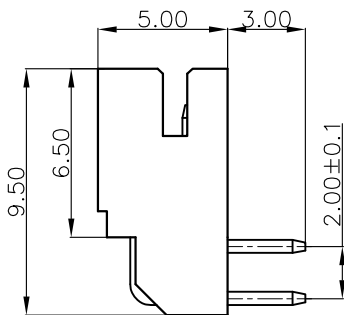
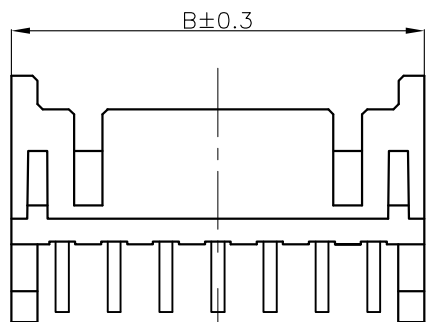
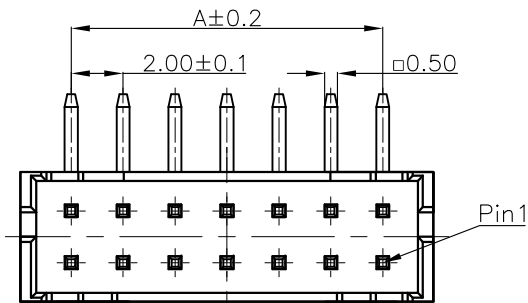
DRAWING: Hu yatao	GENERAL TOLERANCE .X:=±0.30 .X*:=±2° .XX:=±0.20 .XX*:=±1° .XXX:=±0.10 .XXX*:=±0.5°	
CHECKED: Tony	UNIT: MM	PROJECTION:
APPROVAL: Yang jie	SCALE: N/A	
	SHEET: 1/1	



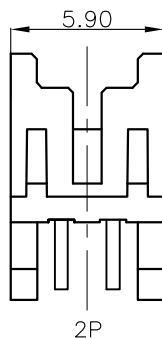
CHIN-BAN
electronics (H.K.) co., ltd

DESCRIPTION: 2.00mm Wire To Broad Double Row 180°	
PART NO: WB2003DS-XXT3	REV: 1.0
CUSTOMER NO:	SIZE: A4

ROHS G103



RECOMMENDED PCB LAYOUT
(TOLERANCE:±0.10)



1.ELECTRICAL SPECIFICATIONS:

- 1.1 Rated current and voltage(额定电流):
2.0A 250V AC(r.m.s)
- 1.2 Dielectric Withstanding Voltage(耐电压) :
800V AC for one minute
- 1.3 Contact Resistance(接触电阻) :
20mΩ max
- 1.4 Insulation Resistance(绝缘电阻) :
1000MΩ min
- 1.5 Operating Temperature(工作温度) :
-25℃ ~ 85℃

2.MATERIAL SPECIFICATION:

- 2.1 Insulator Material(绝缘体材质):
PA46 UL94V-0
- 2.2 Contact Material(端子材质):
Brass,Tin-Plated
- 2.3 Applicable wire:28AWG TO 22AWG

▲ Non-tooled parts
No.of positions DIM list:

CONTACTS	DIMENSIONS	
	A	B
4	2.00	5.90
6	4.00	7.90
8	6.00	9.90
10	8.00	11.90
12	10.00	13.90
14	12.00	15.90
16	14.00	17.90
18	16.00	19.90
20	18.00	21.90
22	20.00	23.90
24	22.00	25.90
26	24.00	27.90
28	26.00	29.90
30	28.00	31.90
32	30.00	33.90
34	32.00	35.90
36	34.00	37.90
38	36.00	39.90
40	38.00	41.90

WB2003DR-XXT3

Insulator Material: 3:PA46
Contact Plating :T:Tin all Over
NO of Contacts: 4 to 40
Welding Method:DR=DIP90°
Wafer Conn

DRAWING:
Hu yatao

CHECKED:
Tony

APPROVAL:
Yang jie

GENERAL TOLERANCE

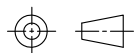
.X:=±0.30 .X':=±2°
.XX:=±0.20 .XX':=±1°
.XXX:=±0.10 .XXX':=±0.5°

UNIT: MM

SCALE: N/A

SHEET: 1/1

PROJECTION:



CHIN-BAN
electronics (H.K.) co., ltd

DESCRIPTION:

2.00mm Wire To Board Wafer Double Row 90°

PART NO: WB2003DR-XXT3

REV: 1.0

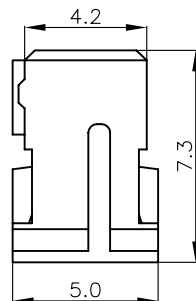
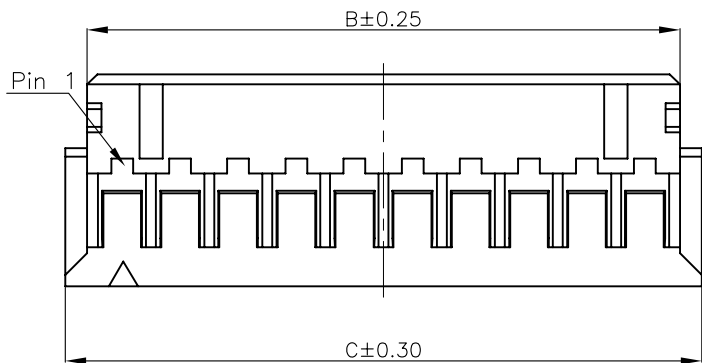
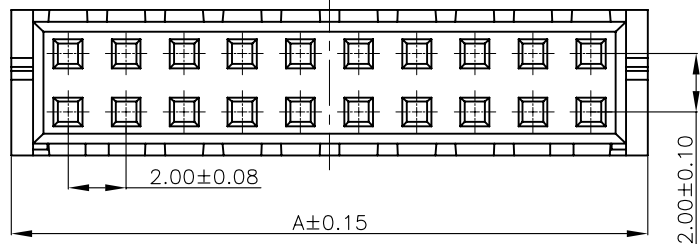
CUSTOMER NO:

SIZE: A4

G
D
C
B
A
H

G
H

ROHS G103



1.ELECTRICAL SPECIFICATIONS:

- 1.1 Rated current and voltage(额定电流):
2.0A 250V AC(r.m.s)
- 1.2 Dielectric Withstanding Voltage(耐电压) :
800V AC for one minute
- 1.3 Contact Resistance(接触电阻) :
20mΩ max
- 1.4 Insulation Resistance(绝缘电阻) :
1000MΩ min
- 1.5 Operating Temperature(工作温度) :
-25℃ ~ 85℃

2.MATERIAL SPECIFICATION:

- 2.1 Insulator Material(绝缘体材质):
PA66,UL94V-0(nature)
- 2.2 Applicable wire:28AWG-22AWG

▲ Non-tooled parts
No. of positions DIM list:

CONTACTS	DIMENSIONS		
	A	B	C
4	2.00	4.40	5.90
6	4.00	6.40	7.90
8	6.00	8.40	9.90
10	8.00	10.40	11.90
12	10.00	12.40	13.90
14	12.00	14.40	15.90
16	14.00	16.40	17.90
18	16.00	18.40	19.90
20	18.00	20.40	21.90
22	20.00	22.40	23.90
24	22.00	24.40	25.90
26	24.00	26.40	27.90
28	26.00	28.40	29.90
30	28.00	30.40	31.90
32	30.00	32.40	33.90
34	32.00	34.40	35.90
36	34.00	36.40	37.90
38	36.00	38.40	39.90
40	38.00	40.40	41.90

PART NO. LEGEND:
WB2003DSH-XXP2

Insulator Material: 2:PA66

NO of Contacts: 4 to 40

H:Housing

Wafer Conn

DRAWING:
Hu yatao

GENERAL TOLERANCE

.X:=±0.30 .X*:=±2°
.XX:=±0.25 .XX*:=±1°
.XXX:=±0.15 .XXX*:=±0.5°

CHECKED:
Tony

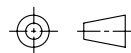
UNIT: MM

PROJECTION:

DESCRIPTION:
2.00mm Pitch Housing Double Row

APPROVAL:
Yang jie

SCALE: N/A



PART NO: WB2003DSH-XXP2

REV: 1.0

SHEET: 1/1

CUSTOMER NO:

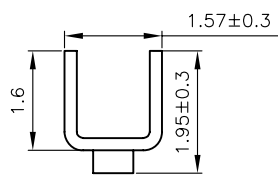
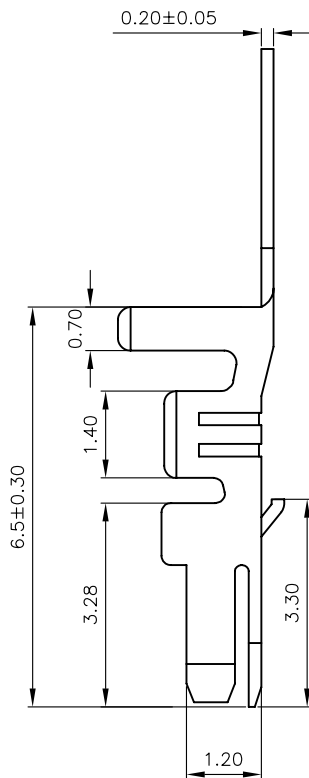
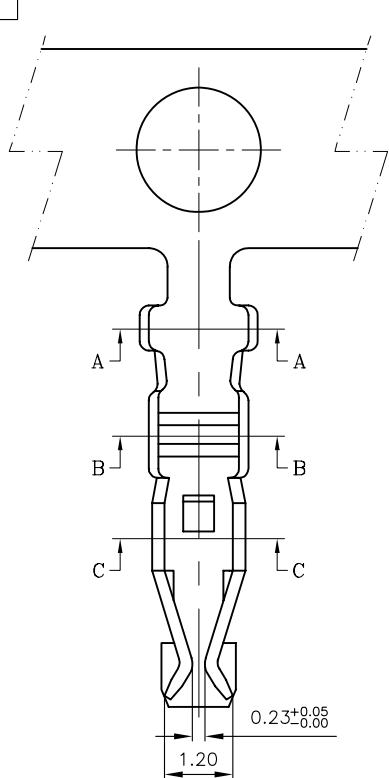
SIZE: A4



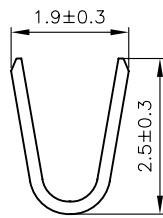
CHIN-BAN
electronics (H.K.) co., ltd

E							
D							
C							
B							
A							
NO.	DATE	DESCRIPTION	APPROVAL				

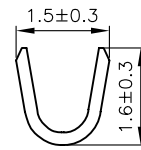
ROHS G103



SECTION C-C
SCALE 1 1



SECTION A-A
SCALE 1 1

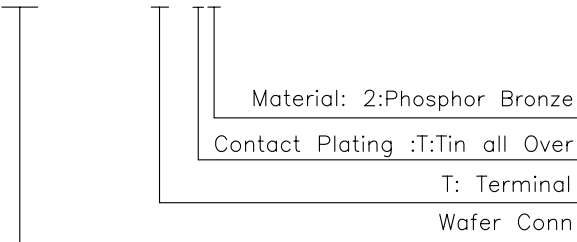


SECTION B-B
SCALE 1 1

1.ELECTRICAL SPECIFICATIONS:

- 1.1 Rated current and voltage(额定电流):
2.0A 250V AC(r.m.s)
- 1.2 Dielectric Withstanding Voltage(耐电压) :
800V AC for one minute
- 1.3 Contact Resistance(接触电阻) :
20mΩ max
- 1.4 Insulation Resistance(绝缘电阻) :
1000MΩ min
- 1.5 Operating Temperature(工作温度) :
-25℃ ~ 85℃
- 1.6 Material:
Phosphor Bronze (UL94V-0); Tin
- 1.7 Applicable wire:28AWG-22AWG

PART NO. LEGEND:
WB2003DST-T2



DRAWING:
Hu yatao

CHECKED:
Tony

APPROVAL:
Yang jie

GENERAL TOLERANCE

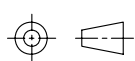
.X:=±0.30 .X':=±2°
.XX:=±0.20 .XX':=±1°
.XXX:=±0.10 .XXX':=±0.5°

UNIT: MM

SCALE: N/A

SHEET: 1/1

PROJECTION:



CHIN-BAN
electronics (H.K.) co., ltd

DESCRIPTION:

2.00mm Pitch Terminal

PART NO: WB2003DST-T2

REV: 1.0

CUSTOMER NO:

SIZE: A4

E			
D			
C			
B			
A			
NO.	DATE	DESCRIPTION	APPROVAL