

RoHS+HF+GP

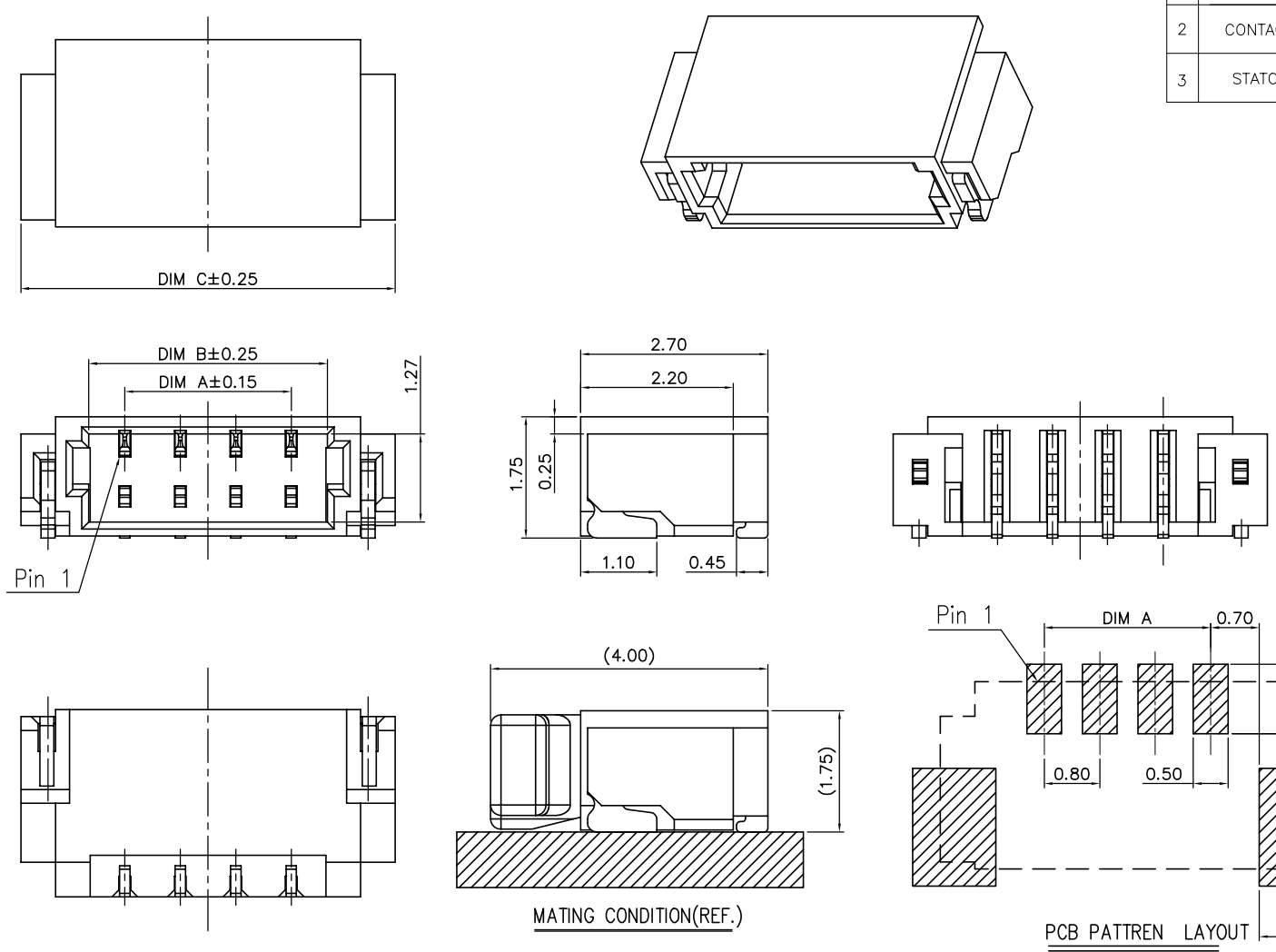
NO.	COMPONENTS	MATERIALS	SPECIFICATION:FINISH/COLOR	QTY.
1	HOUSING	GLASS FILLED	UL94V-0 BLACK/NATURAL	1
2	CONTACT	PHOSPHOR BRONZE; T=0.15mm	SURFACE PLATING:TIN/Au UNDER PLATING:Ni	N
3	STATOR	BRASS; T=0.20mm	SURFACE PLATING:TIN/Au UNDER PLATING:Ni	2

NOTE:
1.ALL MATERIAL MUST BE COMPLY WITH RoHS&HF&GP.
2.PART NO. LEGEND:

- WB0802UR-XXX7
- 7: LCP
 - T: TIN PLATING
 - G: GOLD PLATING
 - XX: XX POSITIONS
 - R: RIGHT ANGLE
 - U: SMT TYPE
 - 080: 0.80mm PITCH CONNECTOR
 - WB: WIRE TO BOARD CONNECTOR

NO.OF POSITIONS DIM LIST:

CKT	Dim A	Dim B	Dim C
2	1.60	1.84	3.80
3	1.60	2.64	4.60
4	2.40	3.44	5.40
5	3.20	4.24	6.20
6	4.00	5.04	7.00
7	4.80	5.84	7.80
8	5.60	6.64	8.60
9	6.40	7.44	9.40
10	7.20	8.24	10.20
11	8.00	9.04	11.00
12	8.80	9.84	11.80
13	9.60	10.64	12.60
14	10.40	11.44	13.40
15	11.20	12.25	14.20
16	12.00	13.04	15.00
17	12.80	13.84	15.80
18	13.60	14.64	16.60
19	14.40	15.44	17.40
20	15.20	16.24	18.20
22	16.80	17.84	19.80
24	18.40	19.44	21.40

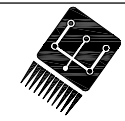


MATING CONDITION(REF.)

PCB PATTREN LAYOUT

5.0				DRAWING:	
4.0				Bains	
3.0				CHECKED:	
2.0				TianHai	
1.0	17.06.09	NEW	TianHai	APPROVAL:	
NO.	DATE	DESCRIPTION	APPROVAL		

GENERAL TOLERANCE	
.X:=±0.30	.X*:=±2°
.XX:=±0.20	.XX*:=±1°
.XXX:=±0.10	.XXX*:=±0.5°
UNIT: MM	PROJECTION:
SCALE: 1/1	
SHEET: 1/1	

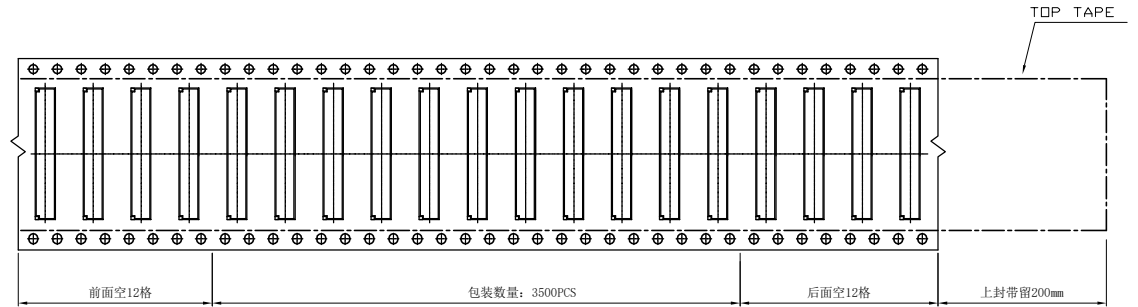
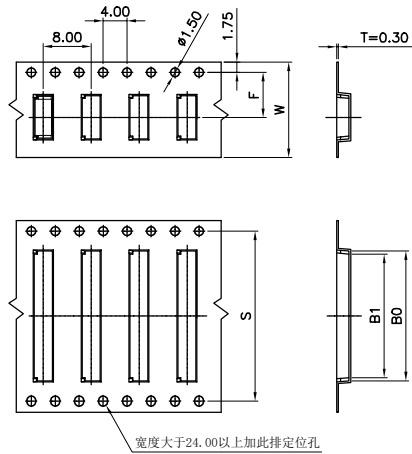


CHIN-BAN
electronics (H.K) co., ltd

DESCRIPTION:	0.8mm Pitch Wafer	
PART NO:	WB0802UR-XXX7	REV:1.0
DRAWING NO:	UK0349	SIZE: A4

REEL INFORMATION:

PIN	B0	B1	F	W	S
02	4.10	3.10	7.50	16.00	
03	4.90	3.90			
04	5.70	4.70			
05	6.50	5.50			
06	7.30	6.30			
07	8.10	7.10			
08	8.90	7.90			
09	9.70	8.70	11.50	24.00	
10	10.50	9.50			
11	11.30	10.30			
12	12.10	11.10			
14	13.70	12.70			
15	14.50	13.50			
16	15.30	14.30			
17	16.10	15.10	14.20	32.00	28.40
20	18.50	17.50			
22	20.10	19.10			
24	21.70	20.70			



THE DIRECTION OF PRODUCT PACKING

产品标签 (1PCS/REEL)

条形码 (1PCS/REEL)

PROTECTION TAPE

WATER-PROOF BAG

TOTAL N LAYERS

VACUUM BAG (450x490x0.15)

条码 (1PCS/BOX)

3500PCS/REEL

N PCS REELS

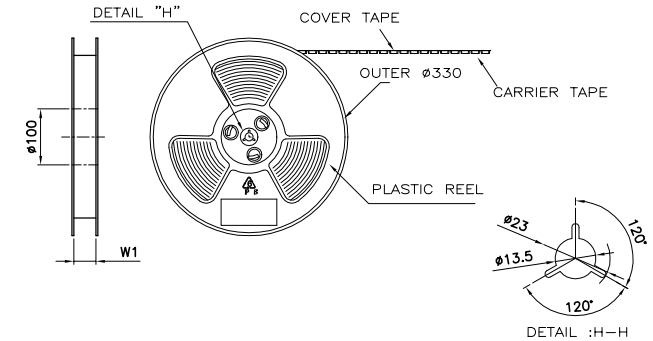
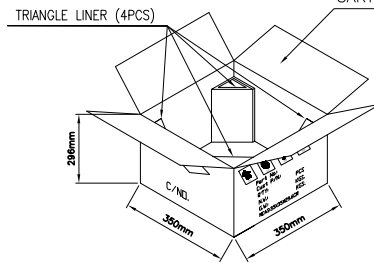
DESICCANT 2PCS

TRIANGLE LINER (4PCS)

CARTON

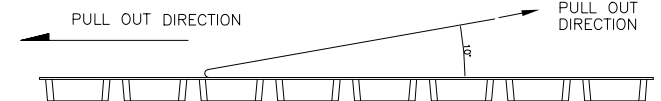
PACKING INFORMATION:

PIN	W	F	PCS/REEL	REEL/CARTON	TOTAL	CARTON
02~09	16.0	7.50	3500PCS	12PCS	42000PCS	350*350*296mm
10~17	24.0	11.50	3500PCS	8PCS	28000PCS	350*350*296mm
20~24	32.0	14.20	3500PCS	7PCS	24500PCS	350*350*296mm



NOTE:

1. PEELING OFF FORCE OF TOP TAPE: 0.1~1.3N (PEELING DIRECTION AS SHOWN IN FOLLOWING FIG.) THIS REQUIREMENT SHOULD BE APPLIED AT SHIPMENT PEEL OFF SHOULD NOT BE ALLOWED, DURING TRANSPORTATION.



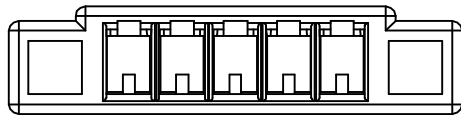
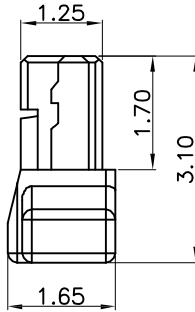
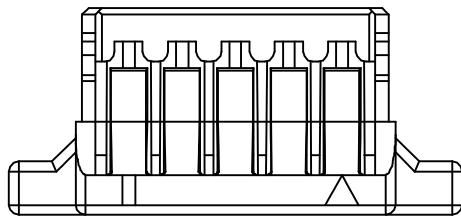
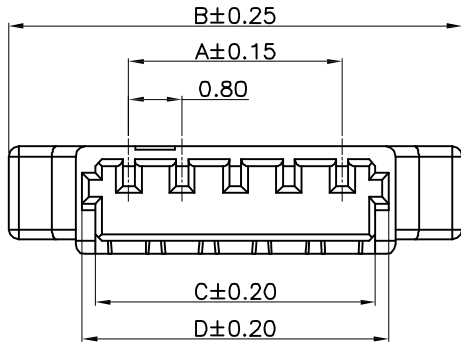
2. MATERIAL:
CARRIER TAPE: POLYSTYREN(P)
TOP TAPE: PE
REEL TAPE: POLYSTYREN(P)

5.0				DRAWING:	
4.0				Bains	
3.0				CHECKED:	
2.0				Tianhai	
1.0	2017.06.26	NEW	Tianhai	APPROVAL:	
NO.	DATE	DESCRIPTION	APPROVAL		

GENERAL TOLERANCE	
.X: ±0.50	.X°: ±2°
.XX: ±0.30	.XX°: ±1°
.XXX: ±0.20	.XXX°: ±0.5°
UNIT: MM	PROJECTION:
SCALE: 1/1	
SHEET: 1/1	

		DESCRIPTION: 0.8mm PITCH WAFER - PACKING
PART NO:	F-WB0802UR-XXX7	REV: 1.0
DRAWING NO:	UT0168	SIZE: A4

ROHS G417



1.ELECTRICAL SPECIFICATIONS:

- 1.1 Rated current and voltage(额定电流):
1.0A Max 30V AC(r.m.s)
- 1.2 Dielectric Withstanding Voltage(耐电压) :
200V AC for one minute
- 1.3 Contact Resistance(接触电阻) :
30mΩ max
- 1.4 Insulation Resistance(绝缘电阻) :
200MΩ min
- 1.5 Operating Temperature(工作温度) :
-25°C ~ 85°C

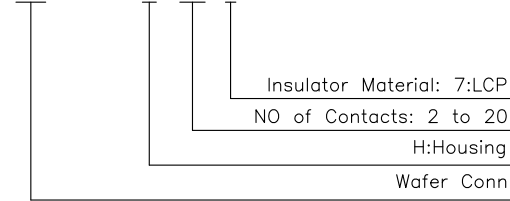
2.MATERIAL SPECIFICATION:

- 2.1 Insulator Material(绝缘体材质):
High Temperature Plastic,UL94V-0

▲ Non-tooled parts
No.of positions DIM list:
▲ 代表不可做Pin数

PIN	DIM.(mm)			
	A	B	C	D
02	/	4.40	1.80	2.20
03	1.60	5.20	2.60	3.00
04	2.40	6.00	3.40	3.80
05	3.20	6.80	4.20	4.60
06	4.00	7.60	5.00	5.40
07	4.80	8.40	5.80	6.20
08	5.60	9.20	6.60	7.00
09	6.40	10.00	7.40	7.80
10	7.20	10.80	8.20	8.60
11	8.00	11.60	9.00	9.40
12	8.80	12.40	9.80	10.20
13	9.60	13.20	10.60	11.00
14	10.40	14.00	11.40	11.80
15	11.20	14.80	12.20	12.60
16	12.00	15.60	13.00	13.40
17	12.80	16.40	13.80	14.20
18	13.60	17.20	14.60	15.00
19	14.40	18.00	15.40	15.80
20	15.20	18.80	16.20	16.60

PART NO. LEGEND:
WB080AURH-XXP7



E				DRAWING:	GENERAL TOLERANCE .X:=±0.25 .X*:=±2° .XX:=±0.15 .XX*:=±1° .XXX:=±0.10 .XXX*:=±0.5°
D				Hu yatao	
C				CHECKED:	
B				Tony	UNIT: MM PROJECTION:
A				APPROVAL:	SCALE: N/A
NO.	DATE	DESCRIPTION	APPROVAL	Yang jie	SHEET: 1/1

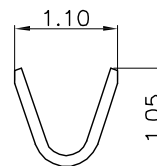
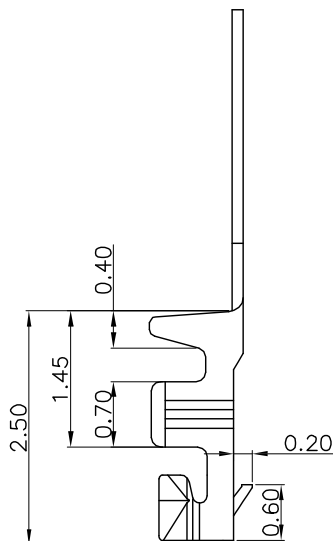
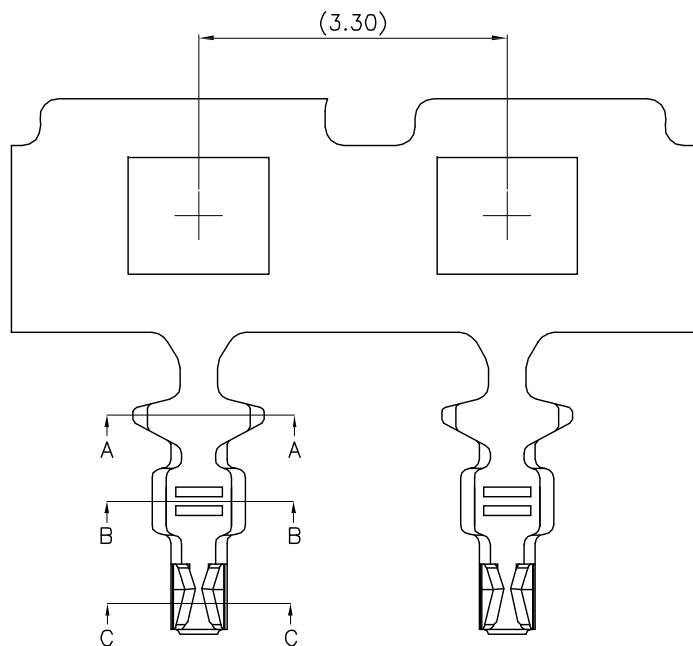


CHIN-BAN
electronics (H.K.) co., ltd

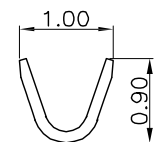
DESCRIPTION:
0.8mm PITCH HOUSING

PART NO: WB080AURH-XXP7	REV: 1.0
CUSTOMER NO:	SIZE: A4

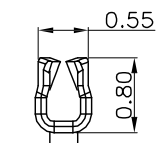
ROHS G417



Section A-A



Section B-B



Section C-C

1.ELECTRICAL SPECIFICATIONS:

- 1.1 Rated current and voltage(额定电流):
1.0A 30V AC(r.m.s)
- 1.2 Dielectric Withstanding Voltage(耐电压) :
200V AC for one minute
- 1.3 Contact Resistance(接触电阻) :
30mΩ max
- 1.4 Insulation Resistance(绝缘电阻) :
200MΩ min
- 1.5 Operating Temperature(工作温度) :
-25℃ ~ 85℃
- 1.6 Material:
Phosphor Bronze (UL94V-0); Tin/Gold
- 1.7 Applicable wire:
28 AWG~32 AWG OD:0.5~0.6mm

PART NO. LEGEND:
WB080AURT-X2

Material: 2:Phosphor Bronze
Contact Plating :T:Tin G:Gold
T: Terminal
Wafer Conn

DRAWING:
Hu yatao

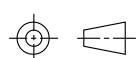
GENERAL TOLERANCE

.X:=±0.30 .X':=±2°
.XX:=±0.20 .XX':=±1°
.XXX:=±0.10 .XXX':=±0.5°

UNIT: MM

PROJECTION:

SCALE: N/A



SHEET: 1/1



CHIN-BAN
electronics (H.K.) co., ltd

DESCRIPTION:

0.80mm Pitch Terminal

PART NO: WB080AURT-X2

REV: 1.0

CUSTOMER NO:

SIZE: A4

CHECKED:
Tony

APPROVAL:
Yang jie

E			
D			
C			
B			
A			
NO.	DATE	DESCRIPTION	APPROVAL