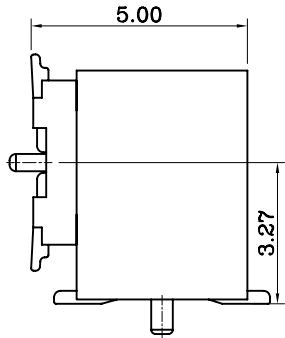
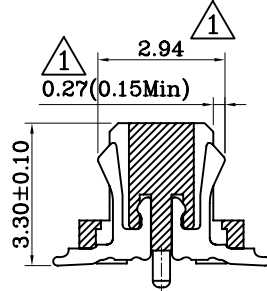
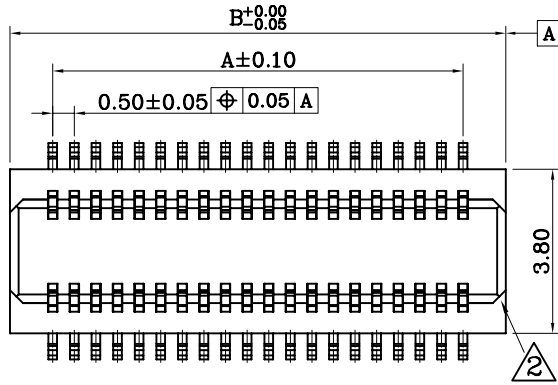


G018 ROHS



MATING HEIGHT:5.0mm



SECTION:A-A

MATERIAL SPECIFICATION:

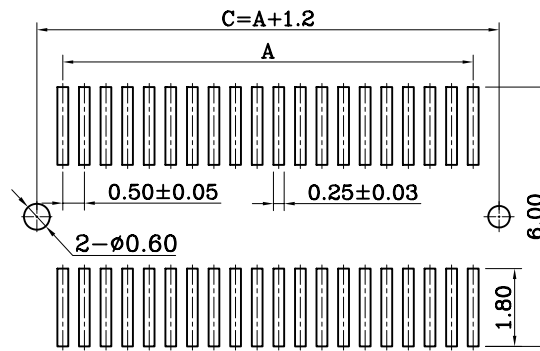
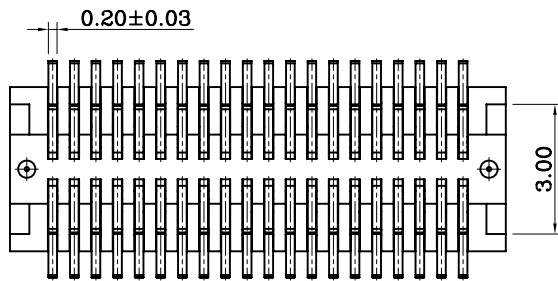
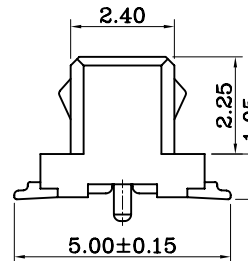
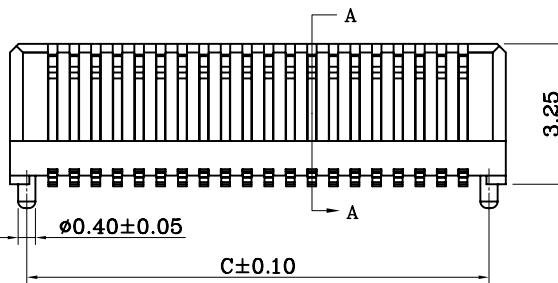
- HOUSING: NYLON 9T PLASTIC(UL94V-0)
 - CONTACT: PHOSPHOR BRONZE
- ELECTRICAL PERFORMANCE
- RATED VOLTAGE(MAX.): 50V AC/DC
 - RATED CURRENT(MAX.): 0.5A AC/DC
 - DIELECTRIC STRENGTH: 250V AC FOR 1 MINUTE BETWEEN ADJACENT TERMINAL, NO BREAKDOWN
 - INSULATION RESISTANCE: 100 MEGOHMS MIN. 250V DC FOR 1 MINUTE BETWEEN ADJACENT TERMINAL
 - CONTACT RESISTANCE: 40 MILLIOHM MAX.
 - OPERATING TEMPERATURE: -25° to +85°

REV	ECN NO.
3.0	EC2013037

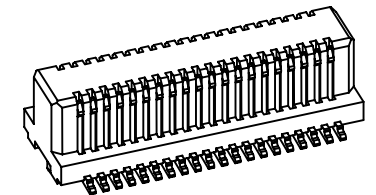
ORDERING INFORMATION

B 1 M XX U - C X R - R
 (1)(2)(3)(4) (5)(6)(7) (8)

- SERIES NO.
1: 0.5mm BOARD TO BOARD CONNECTOR
- MALE & FEMALE TYPE
M: MALE
- NUMBER OF PIN
XX: XX POSITIONS
- TAIL CONSTRUCTION TYPE
U: SMD TYPE
- HOUSING COLOR CODES AND MATERIAL
C: COLOR:NATURAL COLOR AND MATERIAL:PA9T
- CONTACT PLATING:
1: GOLD FLASH OVER ALL
2: 15u" GOLD PLATED OVER ALL
3: 30u" GOLD PLATED OVER ALL
4: 3u" GOLD PLATED OVER ALL
- MALE & FEMALE INFIX TYPE
S: STRAIGHT
R: RIGHT ANGLE
- PACKING: REEL



RECOMMENDED P.C.B LAYOUT



注: "▲"有生产PIN数
 MARK"▲"SHOW THE PRODUCED NUMBER

Pin	Dim A	Dim B	Dim C
2x5	2.00	3.98	3.20
2x6	2.50	4.48	3.70
2x7	3.00	4.98	4.20
2x8	3.50	5.48	4.70
2x9	4.00	5.98	5.20
2x10	4.50	6.48	5.70
2x11	5.00	6.98	6.20
2x12	5.50	7.48	6.70
2x13	6.00	7.98	7.20
2x14	6.50	8.48	7.70
2x15	7.00	8.98	8.20
2x16	7.50	9.48	8.70
2x17	8.00	9.98	9.20
2x18	8.50	10.48	9.70
2x19	9.00	10.98	10.20
2x20	9.50	11.48	10.70

5			
4			
3			
2	2013/03/23	改善端子外露尺寸	Match
1	2011/11/29	改善端子外露尺寸	Match
NO.	DATE	DESCRIPTION	APPROVAL

DRAWING:	GENERAL TOLERANCE
Match	.X:±0.30 .X*:±2° .XX:±0.20 .XX*:±1° .XXX:±0.10 .XXX*:±0.5°
CHECKED:	UNIT: MM PROJECTION:
Toms	SCALE: 1/1
APPROVAL:	SHEET: 1/1



CHIN-BAN
 electronics (H.K) co., ltd

DESCRIPTION:	0.5mm Board to Board Plug	
PART NO:	B1MXXU-C1R-R	REV: 3.0
DRAWING NO:	P2B1MXXU-C1R-R-01	SIZE: A4