

G571

NOTES:

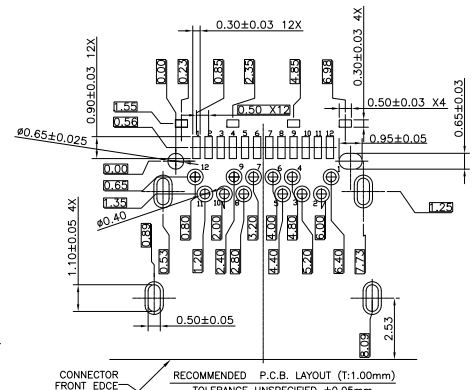
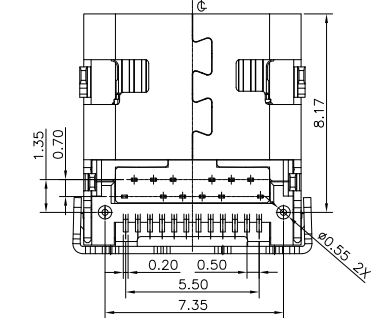
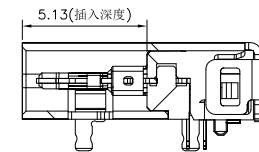
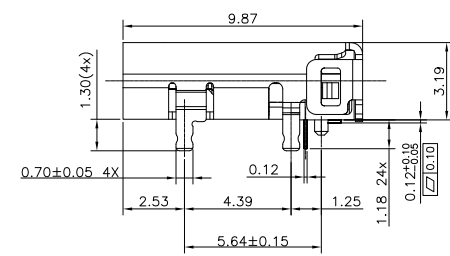
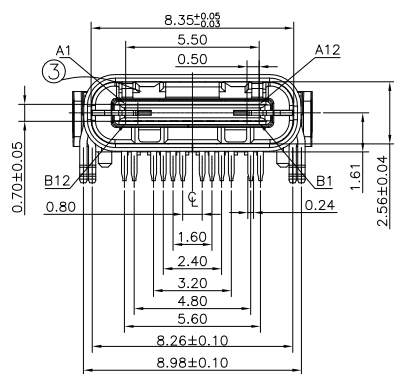
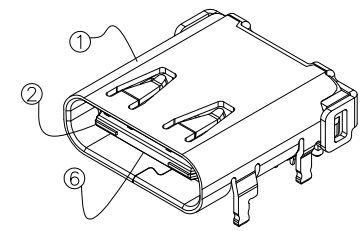
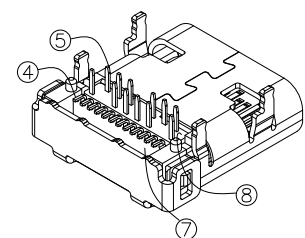
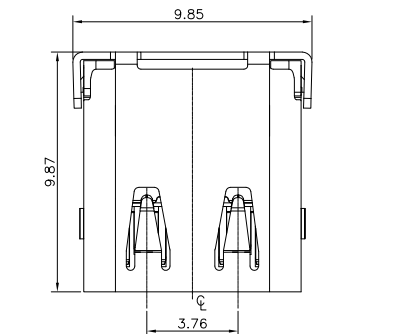
SPECIFICATION:

1. CURRENT RATING: 3.0A MAX
2. VOLTAGE: 100 VAC
3. TEMPERATURE RANGE: -30 °C ~ 85 °C
4. CONTACT RESISTANCE: 40 MILLIONHM MAX
5. INSULATION RESISTANCE: 100 MEGOHMS MIN.
6. LNSERTION FORCE : 5N~20N
7. UNMATING FORCE: 8N~20N
8. DURABILITY: 10,000 CYCLES

ORDERING INFORMATION

U 5 F 24 E - B 1 N - 04 R
 (1)(2)(3) (4) (5) (6)(7) (8) (9)

1. SERIES NO.
U: USB CONNECTOR SERIES
2. USB TYPE
5: USB 3.1 C TYPE
3. USB MALE & FEMALE TYPE
F: FEMALE
4. NUMBER OF PIN
24: 24 POSITIONS
5. TAIL CONSTRUCTION TYPE
E: TERMINAL: DIP+SMT TYPE
SHELL: DIP TYPE
6. HOUSING MATERIAL
B: MATERIAL:LCP,BLACK
7. CONTACT PLATING:
1: CONTACT AREA 1u" Gold
SOLDER AREA: 80u" Tin
8. SHELL PLATING
N: NICKEL PLATING
9. PACKING

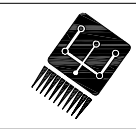


A1	GND	B12	GND
A2	SSTXP1	B11	SSRXP1
A3	SSTXN1	B10	SSRXN1
A4	VBUS	B9	VBUS
A5	CC1	B8	SBU2
A6	DP1	B7	DN2
A7	DN1	B6	DP2
A8	SBU1	B5	CC2
A9	VBUS	B4	VBUS
A10	SSRXN2	B3	SSTXN2
A11	SSRXP2	B2	SSTXP2
A12	GND	B1	GND
PIN	SIGNAL NAME	PIN	SIGNAL NAME

8	DIP HOUSING	LCP UL94V-0	BLACK	1PCS
7	SMT HOUSING	LCP UL94V-0	BLACK	1PCS
6	LATCH HOUSING	LCP UL94V-0	BLACK	1PCS
5	DIP CONTACT	Copper T=0.12	Gold&Tin	1SET
4	SMT CONTACT	Copper T=0.12	Gold&Tin	1SET
3	EMI	SUS304 T=0.30mm	---	1PCS
2	LATCH	SUS301 T=0.20mm	Ni 50u" Min Plated	1PCS
1	SHELL	SUS304 T=0.30mm	Ni 50u" Min Plated	1PCS
NO.	DESCRIPTION	MATERIAL	REMARKS	QTY

E				DRAWING:			
D				Huyatao			
C				CHECKED:			
B				Yangjie			
A				APPROVAL:			
NO.	DATE	DESCRIPTION	APPROVAL				

GENERAL TOLERANCE			
.X:±0.30	.X*:±2°		
.XX:±0.20	.XX*:±1°		
.XXX:±0.10	.XXX*:±0.5°		
UNIT: MM	PROJECTION:		
SCALE: N/A			
SHEET: 1/1			



CHIN-BAN
electronics (H.K) co., ltd

DESCRIPTION:			
USB Conn Female C Type			
PART NO: U5F24E-B1N-04R		REV: 1.0	
DRAWING NO:		SIZE: A4	