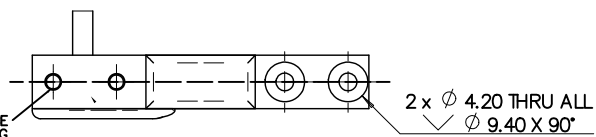
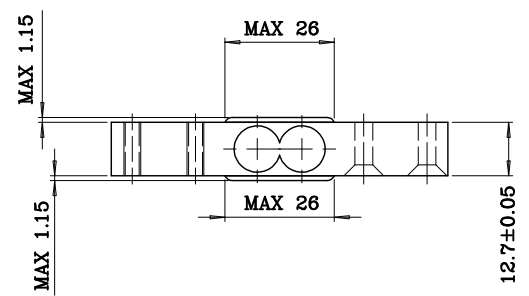
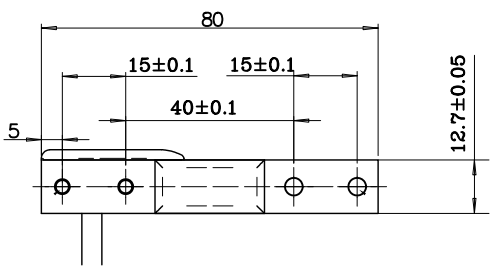


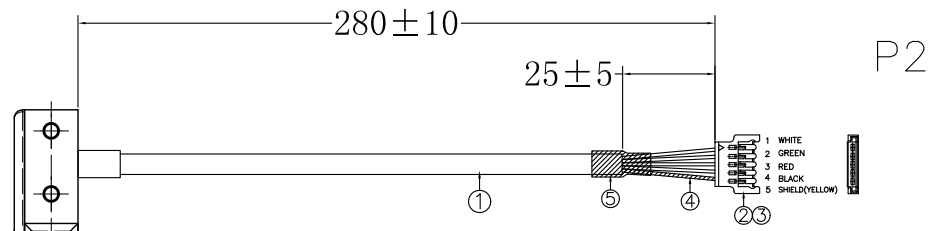
ROHS

NO.	DATE	DESCRIPTION	APPROVAL
X0	2017.08.30	NEW PRODUCT	Ricky

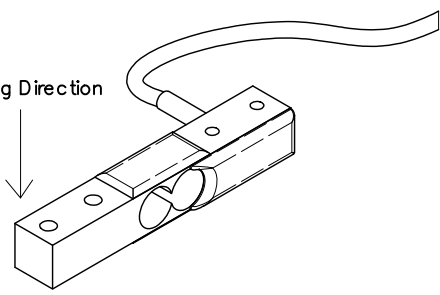


ALL HOLE FEATURES MUST BE PRECISELY ALIGNED ALONG THE CENTRELINE
所有孔位必须精确对准在中心线上

P1



加载方向
Loading Direction



- NOTES:
- 1.100% CONTINUNY TEST ANY OPEN OR MIS WIRE, SHORT OR INTERMITENCE ARE NOT PERMITTED,
 - 2.INSULATION RESISTANCE:DC200V/MINUTE, 20MΩ MIN.
 - 3.DIELECTRIC STRENGTH:250VAC/MINUTE, LEAKAGE CURRENT:1.0mA
 - 4.CONDUCTOR RESISTANCE:DC20mV,10mA, 1Ω MAX.
 - 5.DIELECTRIC WITHSTANDING VOLTAGE: 500V/AC 1MINUTE.

ITEM	TITLE	SPECIFICATION	Q'TY	CHIN-BAN P/N
⑤	TUBE	SHRINK TUBE:Ø4.0x15MM 125°C 600V BLACK	1PCS	———
④	TUBE	SHRINK TUBE:Ø1.0MM 125°C 600V YELLOW	1PCS	———
③	TERMINAL	CRIMPING TERMINAL PHOSPHOR BRONZE TIN-PLATED 24-28AWG	5PCS	JINDA:51006-RT
②	HOUSING	SINGLE ROW PLUG PITCH:2.0mm*5PIN WHITE	1PCS	JINDA:51006-5R
①	CABLE	MATCHED CONNECTOR+24AWGx4C+BRAID CABLE BALCK	1PCS	6512-15kg

DRAWING:
Ricky
2017.08.30

CHECKED:
Ricky
2017.08.30

APPROVAL:
Cykin
2017.08.30

TOLERANCE
.X:=±0.50
.XX:=±0.30
.XXX:=±0.10
.X':=±2°

CHIN-BAN
electronics (H.K) co., ltd

DESCRIPTION:
Load cell cable

UNIT: mm CUSTOMER: REV: X0

SCALE:N/A CUSTOMER P/N DEF. UK

SHEET:1/1 DRAWING NO: A-HSHS-3002-H077 SIZE: A4