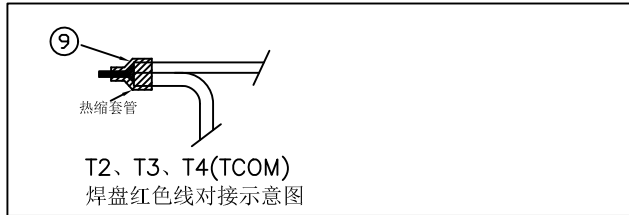
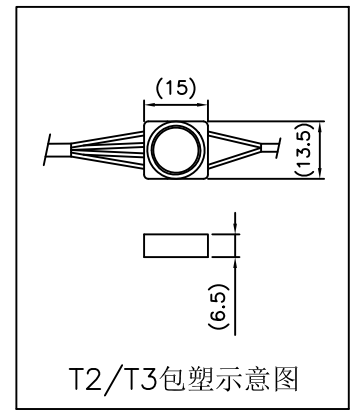
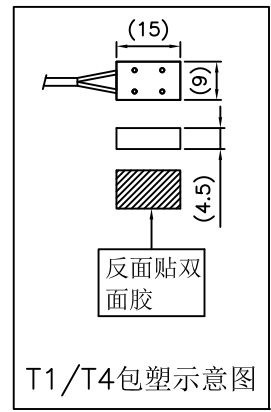
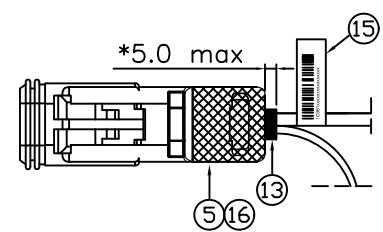
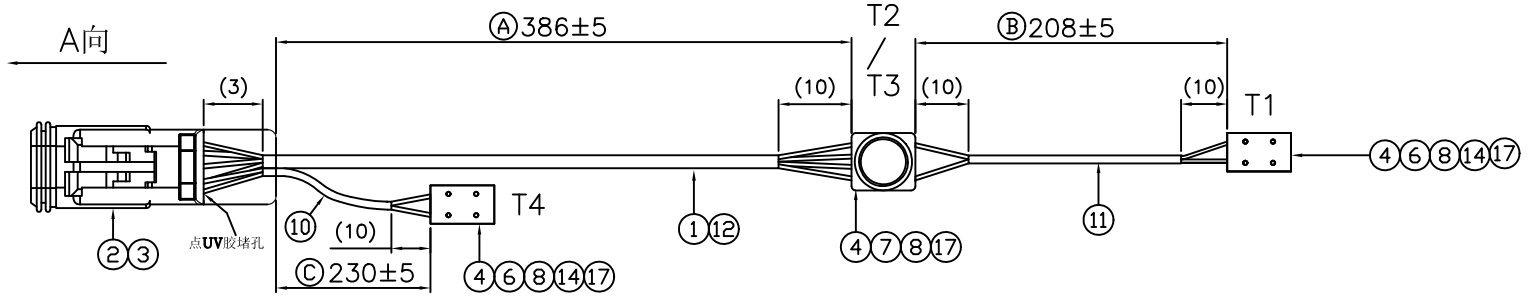
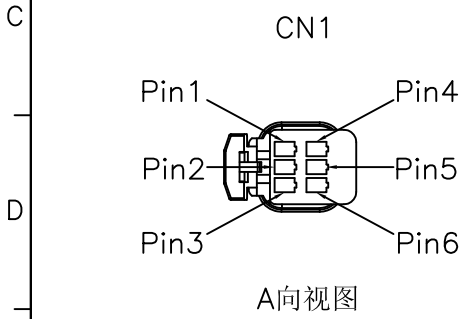
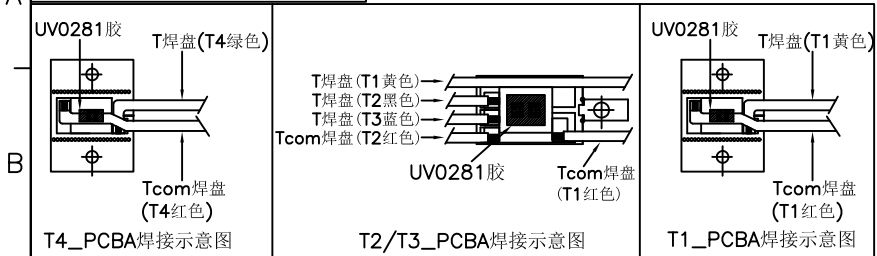


ROHS+REACH

NO.	DATE	DESCRIPTION	APPROVAL
X0	2017.06.14	NEW PRODUCT	Melo



CONN1	Pin6	Pin5	Pin4	Pin3	Pin1
NTC(T#)	T3(T焊盘)	T2(T焊盘)	T1(T焊盘)	T1、T2、T3、T4(TCOM焊盘)	T4(T焊盘)
线材颜色	蓝色	黑色	黄色	红色	绿色

DRAWING: *Melo*
2017.06.14

CHECKED: *Ricky*
2017.06.14

APPROVAL: *Bykin*
2017.06.14

TOLERANCE
.X:±0.50
.XX:±0.30
.XXX:±0.10

UNIT: MM
SCALE: N/A
SHEET: 1/2

CHIN-BAN
electronics (H.K.) co., ltd

DESCRIPTION: 采样线束_2P10S_温度

CUSTOMER NO:
CUSTOMER P/N:
DRAWING NO:A-HSHS-37JY-C572

REV:X0
DEF. UK
SIZE: A4

ROHS+REACH

NO.	DATE	DESCRIPTION	APPROVAL
X0	2017.06.14	NEW PRODUCT	Melo

技术要求:

1. 未注尺寸参照3D图纸, 未注公差参照行业一般尺寸要求;
2. 低压成型前先灌封NTC, 灌封材料为环氧树脂, 阻燃等级UL94-V0;
3. 低压成型材料: TPE, 橘红色, 色号166U;
4. 端子与线束连接要线芯可见, 不得损伤电线的绝缘胶皮;
5. ▽选用铁氟龙AWG24导线;
6. NTC型号石塚103KT1608T-1P;
7. 整个线束100%导通, 无短路、错路现象;
8. 端子和电线连接应牢固, 在40N的拉力下不应损伤和脱开; 端子在护套中也应牢固, 在40N的拉力下不应损伤和脱开; 线和PCB焊接拉力MIN40N;
9. 产品信息标识完整, 按类别贴证装箱, 每个采样线束要有一个条码;
10. 标"▽"符号为关键特性, "◇"符号为重要特性, 一般尺寸无符号标识, "()"符号内尺寸为参考尺寸, "△"符号为修改记录;
11. 产品符合RoHS.

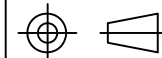
⑰	UV胶	透明色UV胶	1PCS	
⑯	UV胶	橙色UV胶	1PCS	
⑮	Lable	标签 印字“采样线束_2P10S_温度 (6#/6#)”白底黑字 Arial字体 条形码内容“1C961xxxxxxx”	1PCS	
⑭	TAPE	G9000双面胶 13.5*7.5mm	2PCS	
⑬	Tube	黑色热缩套管φ7.0mm 收缩比4: 1	1PCS	
⑫	Tube	黑色热缩套管 超薄型 φ4.0mm	1PCS	
⑪	Tube	黑色热缩套管 超薄型 φ2.5mm	1PCS	
⑩	Tube	黑色热缩套管 超薄型 φ2.5mm	1PCS	
⑨	Tube	黑色热缩套管 超薄型 φ1.5mm*7mm*T0.13mm	1PCS	
⑧	NTC	SMD NTC 10KΩ±1%/25℃ Semitec:103KT1608T-1P	4PCS	
⑦	PCBA	FR-4 PCB T0.4mm 14*9mm	1PCS	
⑥	PCBA	FR-4 PCB T0.4mm 14*8.1mm	2PCS	
⑤	Overmold	PPO N1250 或NHPP NHPP-FR P5H-G0024 橘红色 166U	4G	
④	Overmold	75A TPE PANTONG:164U UL-94V0	10G	
③	TER	连续压接公端子 镀金60u” 凡甲: C30503-21209-C	5PCS	
②	HSG	E-CAR MODULE P:2.2 FEMALE R/A Type 凡甲: C30537-20600-W	1PCS	
①	Wire	UL1332 24AWG OD:1.27mm 颜色: 红色/蓝色/绿色/黑色/黄色	7PCS	
Item	Title	Specification	Q'TY	CHINBAN NO.

DRAWING:
Melo
2017.06.14

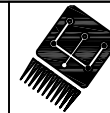
CHECKED:
Ricky
2017.06.14

APPROVAL:
Cykin
2017.06.14

TOLERANCE
.X:=±0.50
.XX:=±0.30
.XXX:=±0.10



UNIT: MM
SCALE: N/A
SHEET: 2/2



CHIN-BAN
electronics (H.K.) co., ltd

DESCRIPTION:
采样线束_2P10S_温度

CUSTOMER NO:	REV:X0
CUSTOMER P/N: 12084544-00	DEF. UK
DRAWING NO:A-HSHS-37JY-C572	SIZE: A4